



To business editors:

## Press release for immediate publication

Contact persons:

Anders Remius, MD and Kent Hertzell, Financial Director

Telephone:

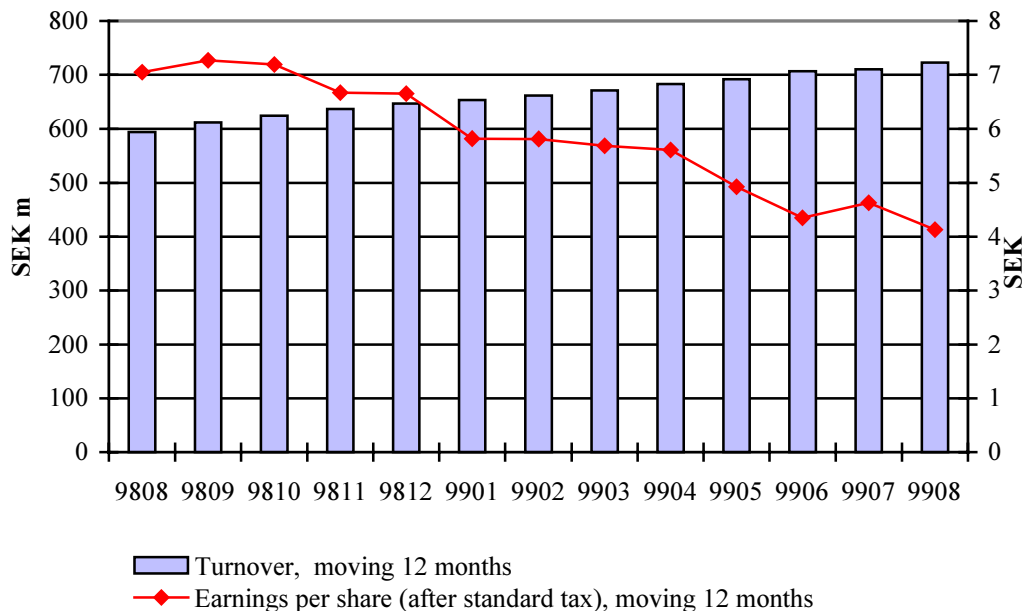
+46 (0)8-683 73 00

Internet:

[www.hl-display.com](http://www.hl-display.com)

# Report January - August 1999 HL Display AB (publ)

- Sales for January to August increased by 18.3% to SEK 492.1 m (415.9) compared to corresponding period 1998. During August sales was SEK 63.6 m (51.2), an increase by 24.2%
- The periods profit before tax amounted to SEK 29.9 m (56.8). The profit for the month was SEK 2.7 m (8.1)



**Address:**  
HL Display AB (publ)  
Horisontvägen 26  
S-128 34 Skarpnäck  
SWEDEN

**Telephone:**  
+46 8 683 73 00

**Telefax:**  
+46 8 683 73 01

**E-mail:**  
[info@hl-display.com](mailto:info@hl-display.com)  
**Internet:**  
[www.hl-display.com](http://www.hl-display.com)

## January to August 1999 in brief

The consolidated sales for the period increased by 18.3 per cent to SEK 492.1 m (415.9). Net sales during August amounted to SEK 63.6 m (51.2), an increase by 24.2%.

Operating profit for the period amounted to SEK 36.6 m (55.3). The profitability is continuously weakened by the under-utilised production capacity. Actions are taken in order to improve capacity utilisation for the production units.

Profit before tax was SEK 29.9 m (56.8). This includes a translation loss on consolidation of SEK -3.6 m (+1.3). This is explained by the strengthening of the Swedish Krona to other Group currencies, primarily to the Euro, since the beginning of this year.

The profit before tax of August was SEK 2.7 m (8.1).

Net investments in fixed assets amounted to SEK 29.2 m (41.7) during the period. In addition SEK 8.4 m (2.4) is related to acquisitions.

## Key figures for the Group

SEK (000s)	8 months Jan 1999 - Aug 1999	8 months Jan 1998 - Aug 1998	Change in per cent	12 months Sept 1998 - Aug 1999	12 months Sept 1997 - Aug 1998	Full year 1998
Net sales	492 088	415 858	+ 18.3	722 876	593 706	646 646
Operating profit	36 626	55 345	-33.8	50 323	73 368	69 042
Profit before tax	29 877	56 793	-47.4	44 053	75 257	70 969
Profit margin %	6.1	13.7	-55.5	6.1	12.7	11.0
Equity/asset ratio, %	52.8	52.5	+ 0.6	52.8	52.5	52.0
Investments, SEK m	37.6	44.1	-14.7	57.1	75.1	63.6
Return on capital, %	-	-	-	12.7	22.0	21.9
Return on shareholders' equity, %	-	-	-	12.5	29.3	24.5
Shareholders' equity per share, SEK	-	-	-	27.11	25.14	26.00
Earnings per share after standard tax, SEK	-	-	-	4.13	7.05	6.65
Earnings per share after full tax, SEK	-	-	-	3.27	6.58	5.81

Stockholm 17.09.1999

### Forthcoming Reports:

Interim report	9 months 1999	18.10.1999
Monthly report	10 months 1999	18.11.1999
Monthly report	11 months 1999	17.12.1999
Year end report	12 months 1999	24.01.2000



**Anders Remius**  
Managing Director

*HL Display shall increase customer profitability by offering the retail trade and its suppliers cost efficient, customer-adapted display systems. Production is to be flexible and delivery times are to be kept short.*

**Address:**  
HL Display AB (publ)  
Horisontvägen 26  
S-128 34 Skarpnäck  
SWEDEN

**Telephone:**  
+46 8 683 73 00

**Telefax:**  
+46 8 683 73 01

**E-mail:**  
info@hl-display.com  
**Internet:**  
[www.hl-display.com](http://www.hl-display.com)