



All-time high at OMX Nordic Exchange

A new all-time high in share trading value was recorded at OMX Nordic Exchange in January. On January 25, the share trading value was EUR 8.4 billion (previous record: EUR 8.0 billion on April 21, 2006). The strong start to the year resulted in a new record in number of trades for the month, with an average of 165,819 per business day (previous record: 161,711 trades per day, May, 2006).

Strongest growth for Information technology and Materials sectors

The two sectors with the strongest growth in January were Information technology and Materials. The trading value for these sectors increased by 104% and 59% respectively, compared to previous month.

Continued strong growth for ETF and Unit trust products

Last year's strong growth for Exchange Traded Funds, ETFs, and Unit trust products continues at an even greater rate. Trading volumes in January were 63% higher than the average for 2006. The daily average trading value in January was EUR 147 million, as compared to EUR 90 million in 2006.

Trading in January

The value of average daily share trading amounted to EUR 5.1 billion, as compared to EUR 4.2 billion during the past 12-month period. The average number of trades per business day amounted to 165,819, as compared to 128,594 during the past 12-month period. The average daily trading volume in Swedish, Finnish and Danish equity and fixed-income derivative products amounted to 622,074 contracts, as compared to 552,598 contracts during the past 12-month period.

All statistics are also available at www.omxgroup.com/nordicexchange

For more information, please contact

Ulrika Areskog, OMX Nordic Exchange Stockholm	+46 8 405 63 76
Outi Ylitalo, OMX Nordic Exchange Helsinki	+358 9 6166 7599
Ellen-Margrethe Soelberg, OMX Nordic Exchange Copenhagen	+45 33 77 04 30
Gudrun Njalsdottir, OMX Nordic Exchange Iceland	+354 525 2865
Tex Vertmann, OMX Nordic Exchange Tallinn	+372 640 88 62
Inese Purgaile, OMX Nordic Exchange Riga	+371 721 24 31
Gintare Blazyte, OMX Nordic Exchange Vilnius	+370 5 272 13 71

About OMX | OMX is a leading expert in the exchange industry. Through the Nordic Exchange, OMX offers access to approximately 80 percent of the Nordic and Baltic securities market. The Nordic Exchange is a term used for marketing purposes and is not a legal entity. It describes the common offering from the Helsinki Stock Exchange, Copenhagen Stock Exchange, Stockholm Stock Exchange, Iceland Stock Exchange, Tallinn Stock Exchange, Riga Stock Exchange and Vilnius Stock Exchange. OMX integrated technology solutions cross the transaction chain enabling efficient securities transactions for over 60 exchange organizations in more than 50 countries. OMX is a Nordic Large Cap company in the Financial sector on the OMX Nordic Exchange. For more information, please visit www.omxgroup.com.

The Nordic Exchange

OMX AB (publ). SE-105 78 Stockholm. SWEDEN. Tel. +46 8 405 60 00. Fax +46 8 405 60 01. Visiting Address: Tullvaktstvägen 15
Reg. No. 556243-8001. www.omxgroup.com

New Companies and Members

New Companies:

Main Market:

- Latvijas Zoovetapgade in Riga, Consumer Staples

First North:

- RayClinic AB in Sweden, Health Care
- New Nordic Healthbrands AB in Sweden, Consumer Staples
- Home Capital AB in Sweden, Financials

New members

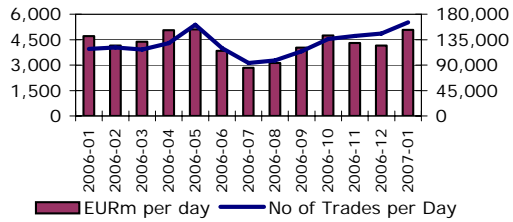
- SkandiaBanken AB in Copenhagen
- Swedbank AB in Copenhagen
- AS SBM Pank in Riga and Vilnius

Turnover and Market cap per sector and segment⁸⁾

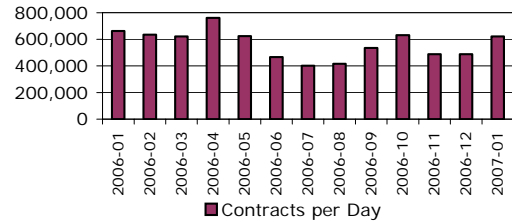
EUR Billion January 2007			
GICS	Turnover	Market cap	% of total market cap
N10 Energy	2.2	14.5	1.6%
N15 Materials	10.7	69.4	7.6%
N20 Industrials	24.5	220.5	24.1%
N25 Consumer Discretionary	6.8	71.7	7.8%
N30 Consumer Staples	2.7	26.7	2.9%
N35 Health Care	7.0	68.0	7.4%
N40 Financials	17.3	218.4	23.8%
N45 Information Technology	31.3	134.7	14.7%
N50 Telecom Services	3.5	73.1	8.0%
N55 Utilities	2.3	19.0	2.1%
Large cap	101.4	818.8	89.4%
Mid cap	5.4	78.3	8.5%
Small cap	1.3	18.8	2.1%

Trading in shares, derivatives, warrants and bonds

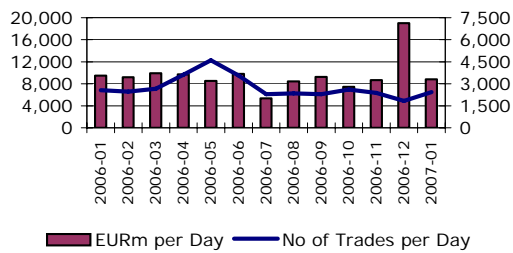
Share trading



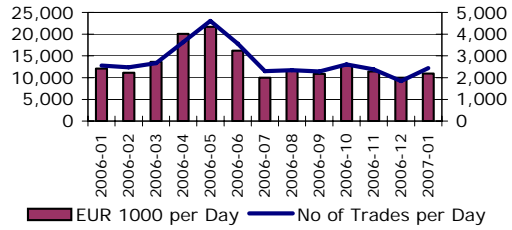
Derivatives trading



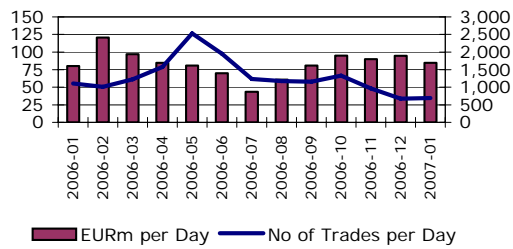
Total Bond trading



Warrant trading



Exchange Bond trading



January 2007	Stockholm	Helsinki	Copenhagen	Iceland	Tallinn	Riga	Vilnius	Total
Companies								
Main market	275	136	190	25	16	41	42	713*
- New listings	-	-	-	-	-	1	-	1
First North	72		10	2				84
- New listings	3		-	-				3
Bonds	1 670	332	2 227	354	5	36	29	4 653
- New listings	22	4	5	8	-	3	1	43
Covered warrants	1 122	376						1 498
- New listings	46	102						148
Members**	86	54	56	27	23	21	30	158**
- New members	-	-	2	-	-	1	1	0***
* Excluding 12 multiple listings								
** Excluding members that are members of more than one exchange (139 total)								
***Unique new members								

OMX, the Nordic Exchange ¹⁾					
Share Trading ²⁾	Jan 2007 ³⁾	Dec 2006	Jan 2006	Feb 2006 - Jan 2007	Year 2006
Value, EUR billions, total	111.6	77.9	100.4	1,065.6	1,054.0
Stockholm Stock Exchange	58.6	44.3	48.8	606.4	596.3
Helsinki Stock Exchange	34.0	17.6	24.5	297.5	287.9
Copenhagen Stock Exchange	15.2	10.8	22.5	134.5	141.9
Iceland Stock Exchange	3.5	3.9	4.5	24.5	25.5
Tallinn Stock Exchange	0.1	0.1	0.07	0.8	0.8
Riga Stock Exchange	0.03	0.01	0.01	0.1	0.1
Vilnius Stock Exchange	0.2	1.19	0.03	1.7	1.6
Value per business day, EUR millions, total	5,071	4,150	4,732	4,229	4,198
Stockholm Stock Exchange	2,662	2,333	2,325	2,407	2,376
Helsinki Stock Exchange	1,547	977	1,165	1,181	1,147
Copenhagen Stock Exchange	691	570	1,023	534	563
Iceland Stock Exchange	158	203	214	97	102
Tallinn Stock Exchange	6	5	3.1	3	3
Riga Stock Exchange	1.1	0.4	0.3	0.4	0.4
Vilnius Stock Exchange	7	63	1.6	7	7
Number of trades, total	3,648,019	2,745,627	2,508,651	32,399,441	31,388,359
Number of trades per business day, total	165,819	146,055	118,423	128,594	124,484
Stockholm Stock Exchange	85,700	79,562	66,986	71,310	69,687
Helsinki Stock Exchange	48,115	37,897	28,281	33,960	32,245
Copenhagen Stock Exchange	29,371	26,535	21,402	21,739	21,043
Iceland Stock Exchange	565	445	850	487	515
Tallinn Stock Exchange	696	449	239	290	251
Riga Stock Exchange	161	156	137	142	140
Vilnius Stock Exchange	1,212	1,011	528	666	605
Market Cap, EUR billion, total	968	930	792	968	930
Stockholm Stock Exchange	487	472	385	487	472
Helsinki Stock Exchange	244	235	210	244	235
Copenhagen Stock Exchange	190	182	157	190	182
Iceland Stock Exchange	32	27	28	32	27
Tallinn Stock Exchange	4	5	3	4	5
Riga Stock Exchange	2	2	2	2	2
Vilnius Stock Exchange	8	8	7	8	8
Turnover rate, %⁴⁾	132	115	151	130	132
First North⁹⁾					
Value per business day, EUR millions	20.0	23.0	21.0	18.1	18.2
Number of trades per business day	4,979	4,965	5,031	3,862	3,862
Market Cap, EUR billion	4.6	4.4	3.3	4.6	4.4

Index Development	Jan 2007	Dec 2006	Jan 2006	Feb 2006- Jan 2007	Year 2006
OMXN40 Index	1,257.8	1,208.3	1,027.8	1,257.8	1,208.3
Change in OMXN40 Index, %	4.1	5.9	0.8	22.4	18.6
OMXS30 Index	1,186.0	1,147.3	962.0	1,186.0	1,147.3
Change in OMXS30 Index, %	3.4	7.4	0.2	23.3	19.5
OMXH25 Index	2,995.1	2,910.5	2,430.3	2,995.1	2,910.5
Change in OMXH25 Index, %	2.9	5.0	5.6	23.2	26.5
OMXC20 Index	462.8	441.5	389.1	462.8	441.5
Change in OMXC20 Index, %	4.8	4.0	-1.1	19.0	12.2
ICEX15 Index	7,043.5	6,410.5	6,271.6	7,043.5	6,410.5
Change in ICEX15 Index, %	9.9	3.8	13.3	12.3	15.8
OMXT Index	996.9	856.3	652.2	996.9	856.3
Change in OMXT Index, %	16.4	9.7	-1.8	52.9	28.9
OMXR Index	694.3	655.5	680.1	694.3	655.5
Change in OMXR Index, %	5.9	2.8	0.6	2.1	-3.1
OMXV Index	517.3	492.7	436.0	517.3	492.7
Change in OMXV Index, %	5.0	7.3	-2.8	18.6	9.8

Bond Trading	Jan 2007	Dec 2006	Jan 2006	Feb 2006- Jan 2007	Year 2006
Value, EUR millions, total					
Exchange traded	1,860	1,797	1,702	20,993	20,835
Reported	192,419	359,604	200,203	2,350,415	2,358,198
Value per business day, EUR millions, total					
Exchange traded	85	95	80	83	83
Reported	8,746	18,927	9,377	9,327	9,381
Value per business day, EUR millions, per exchange					
Stockholm Stock Exchange					
Exchange traded	7	5	3	4	3
Reported	5,758	6,026	6,055	5,696	5,721
Helsinki Stock Exchange					
Reported	0.27	0.17	0.11	0.12	0.11
Copenhagen Stock Exchange					
Exchange traded	16	11	20	12	13
Reported	2,954	12,868	3,285	3,592	3,621
Iceland Stock Exchange					
Exchange traded	60	78	55	66	65
Reported	34	33	37	39	39
Baltic markets					
Exchange traded	0.96	0.71	2.44	1.71	1.84
Reported	0.041	0.000	0.001	0.008	0.005

Derivative Trading⁵⁾	Jan 2007	Dec 2006	Jan 2006	Feb 2006- Jan 2007	Year 2006
Volume in number of contracts					
Equity and fixed-income products, total	13,685,629	9,260,539	13,988,802	139,254,700	139,001,996
Share options and futures, total per business day	408,431	261,049	461,197	348,988	352,084
Stockholm, Copenhagen and Helsinki Stock Exchange	280,061	206,322	326,453	243,607	246,333
Swedish products at EDX	42,484	23,473	46,561	39,615	39,784
Finnish products at Eurex	85,887	31,254	88,183	65,767	65,967
Index options and futures, total per business day	156,565	161,114	160,154	149,280	148,962
Stockholm and Copenhagen Stock Exchange	85,746	93,041	105,664	89,054	90,685
Swedish products at EDX	70,820	68,073	54,490	60,226	58,276
Equity products, total per business day	564,996	422,163	621,351	498,268	501,046
Fixed-income products, total per business day⁶⁾	57,078	65,234	40,583	54,330	52,748
Short-term interest products	43,198	37,010	28,880	37,020	35,672
Long-term interest products	13,880	28,223	11,703	17,309	17,076
Equity and fixed-income products, total per business day	622,074	487,397	661,934	552,598	553,793
Average Premium Value per business day, Stock Options, EUR million⁶⁾	10.1	8.7	9.6	8.5	8.4

Covered Warrant Trading	Jan 2007	Dec 2006	Jan 2006	Feb 2006- Jan 2007	Year 2006
Value, EUR millions, total	240.6	183.0	254.2	3,350.5	3,364.2
Value per business day, EUR thousand, total	10,934	9,995	12,105	13,296	17,834
Stockholm Stock Exchange	2,587	3,072	3,776	4,685	6,399
Helsinki Stock Exchange	8,347	6,924	8,329	8,611	11,435
Number of trades, total	53,565	33,766	53,705	693,060	693,200
Number of trades per business day, total	2,435	1,838	2,557	2,750	3,677
Stockholm Stock Exchange	689	674	1,105	1,288	1,769
Helsinki Stock Exchange	1,746	1,164	1,452	1,462	1,908

ETF Trading/Investment funds ⁷⁾	Jan 2007	Dec 2006	Jan 2006	Feb 2006-Jan 2007	Year 2006
Value, EUR millions, total	3,226.2	2,643.7	2,146.7	23,581.2	22,405.2
Value per business day, EUR millions, total	147	141	102	94	90
Stockholm Stock Exchange	23.8	25.0	12.0	20.6	19.6
Helsinki Stock Exchange	6.0	3.1	1.0	3.2	2.7
Copenhagen Stock Exchange	114.6	111.2	89.0	69.0	66.7
Iceland Stock Exchange	2.2	1.8	0.2	0.8	0.6
Number of trades, total	148,522	122,498	120,428	1,078,003	1,049,397
Number of trades per business day, total	6,751	6,447	5,474	4,278	4,165
Stockholm Stock Exchange	373	496	83	290	266
Helsinki Stock Exchange	11	7	8	8	8
Copenhagen Stock Exchange	6,364	5,944	5,383	3,978	3,892
Iceland Stock Exchange	4	3	2	2	2

Trading days	Jan 2007	Dec 2006	Jan 2006	Feb 2006-Jan 2007	Year 2006
Stockholm Stock Exchange	22	19	21	252	251
Helsinki Stock Exchange	22	18	21	252	251
Copenhagen Stock Exchange	22	19	22	252	252
Iceland Stock Exchange	21	19	21	249	249
Tallinn Stock Exchange	22	19	22	252	252
Riga Stock Exchange	22	19	22	250	250
Vilnius Stock Exchange	22	19	21	243	242
EDX London	22	19	21	252	251
Eurex	22	18	22	253	253

1) The reported figures pertain to OMX, the Nordic Exchange in total, unless otherwise stated. Stockholm Stock Exchange figures also include Xternal list. Helsinki Stock Exchange figures also include Prelist, BL Market and Swedish shares list. Copenhagen Stock Exchange figures include total share trading. Iceland Stock Exchange figures include Iceland Main list and Alternative market. Tallinn Stock Exchange figures include Baltic Main list, Baltic I-list and Baltic Free list. Riga Stock Exchange figures include Baltic Main list, Baltic I-list and Baltic Free list. Vilnius Stock Exchange figures include the Baltic Main list and Baltic I-list.

2) Share trading is influenced by extraordinary trading activity in TDC A/S on January 27 in connection with the result of a takeover bid for the company. The high trading activity in TDC has no impact on OMX's result. (TDC turnover by January, 27: EUR 7 698 million) Affects ytd -and last 12 months figures

3) Exchange rate Average January: SEK/EUR: 9.08 DKK/EUR: 7.45 ISK/EUR:0.91 Ultimo January: SEK/EUR: 9.05 DKK/EUR: 7.46 ISK/EUR:0.93

4) The turnover velocity is estimated as total turnover during the period divided by the number of business days during the period multiplied by 250 and divided by the average market value during the period.

5) The reported figures pertain to OMX in total, unless otherwise stated.

6) Only Stockholm Stock Exchange and EDX London figures.

7) Stockholm Stock Exchange, Helsinki Stock Exchange and Iceland Stock Exchange only trading in ETF:s. Copenhagen Stock Exchange only trading in Investment funds.

8) Turnover and Market cap per sector and segment include the Nordic list in Stockholm, Helsinki and Copenhagen Exchange.

9) Include First North trading in Stockholm, Copenhagen and Iceland Stock Exchange.