



Mission

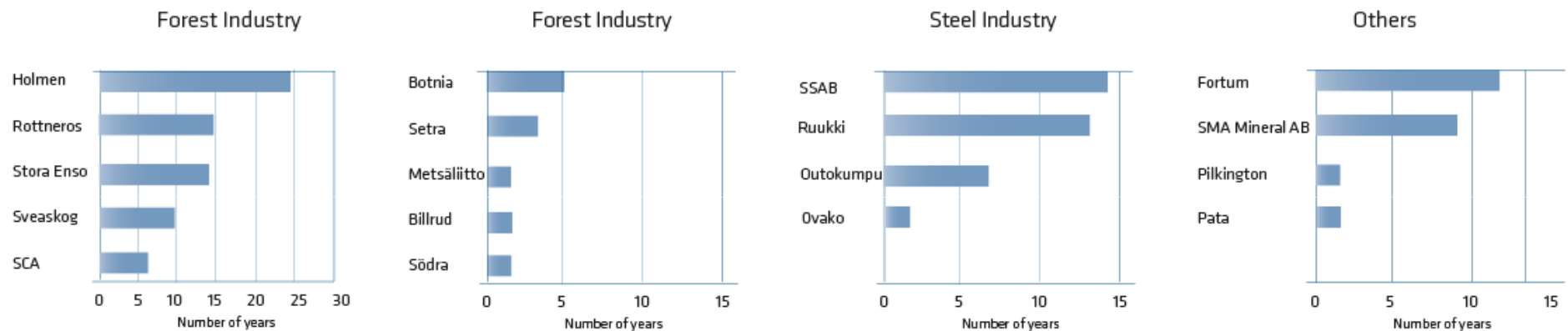
We increase our clients competitiveness by providing efficient transport solutions.

Core values

- » Delivery of high customer value
- » People always in centre
- » Continuous improvement and development



Long customer relations and contracts with blue chip counterparties



The organisation (Number of employees)

Sweden:

- » Österströms – Norrköping, Stockholm (35)
- » MultiDocker Cargo Handling AB (5)
- » Västerviks Logistik & Industri AB (8)

Finland:

- » Österströms OY (4)

Estonia:

- » Österströms Laevanduse AS (5)

Latvia:

- » Daugava Shipping Services (5)
- » MultiDocker SIA (0)

Poland:

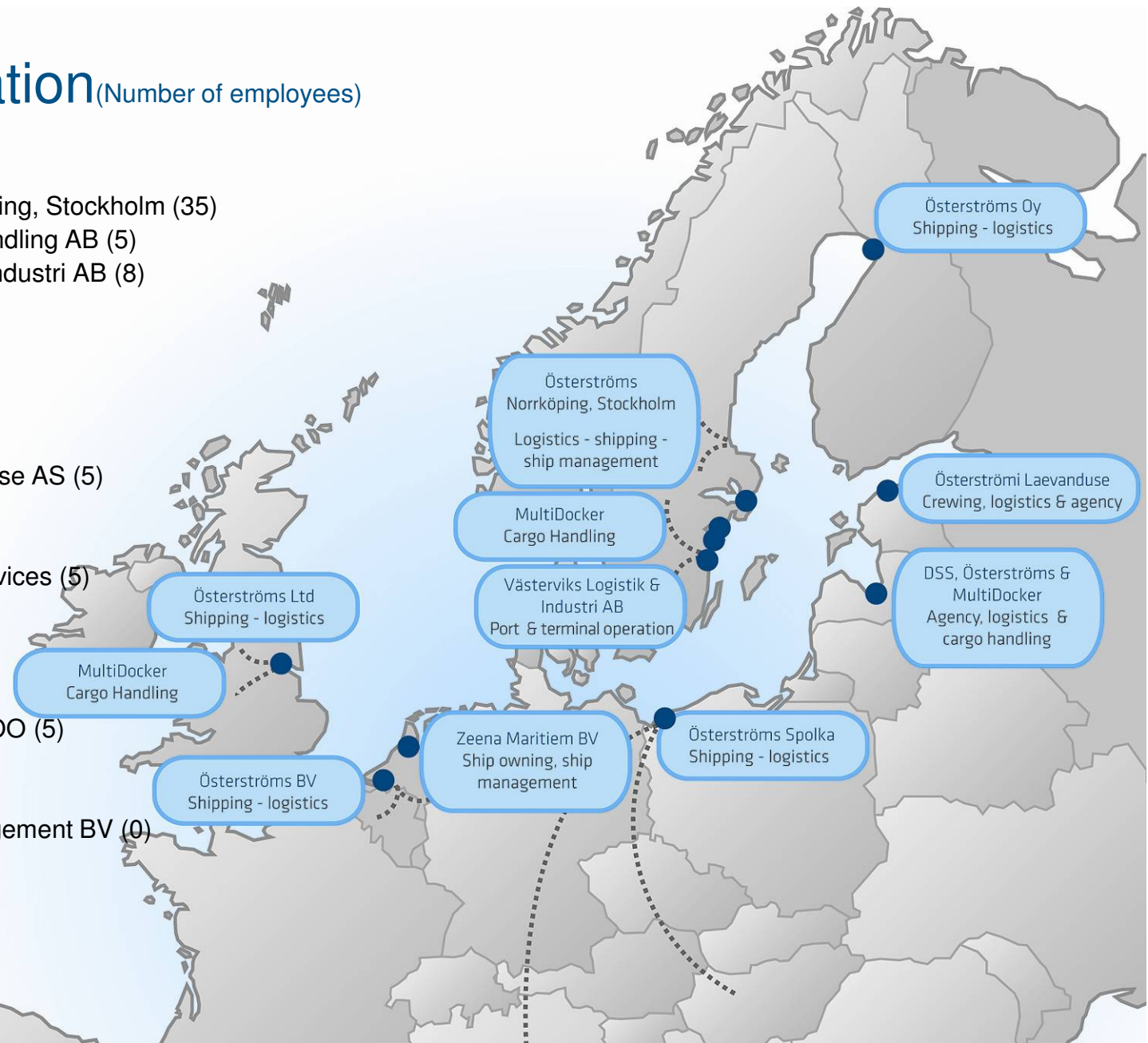
- » Österströms Spolka ZOO (5)

The Netherlands:

- » Zeena Maritiem Management BV (0)
- » Österströms BV (4)

United Kingdom:

- » Österströms Ltd (4)
- » MultiDocker UK (0)



Industrial shipping

- » Some 30 vessels
- » 3200 dwt - 6400 dwt
- » Optimised routes and systems
- » Network for operative business, technical operational maintenance and crews
- » Flexible customer solutions by combining loads or by utilising the whole or parts of the cargo space of the vessels.



Terminal operation

- » Sweden (Västervik), Poland (Szczecin) & Great Britain (Hull).
- » Shipping, port and stevedore work, contract work, cargo handling, shipyards, logistics, the haulage business, railways, agency activities and ship brokerage.
- » The basic premise is cost-effective cargo handling solutions and land-based bridges to Scandinavia and Europe.



Land transports

Via our network of partners we offer fast and reliable land transport solutions.

- » Trucks
- » Railway
- » Inland waterways



Integrated logistics

» Our ambition is to create **added value** through - *one contact, one contract & one invoice.*

» In close **cooperation** with customers and partners we create efficient and cost saving unbroken physical transport chains and parallel chains of information.

» **Services:** industrial maritime transport services, terminal operation, cargo handling, warehousing, intermediate storage and IT-services

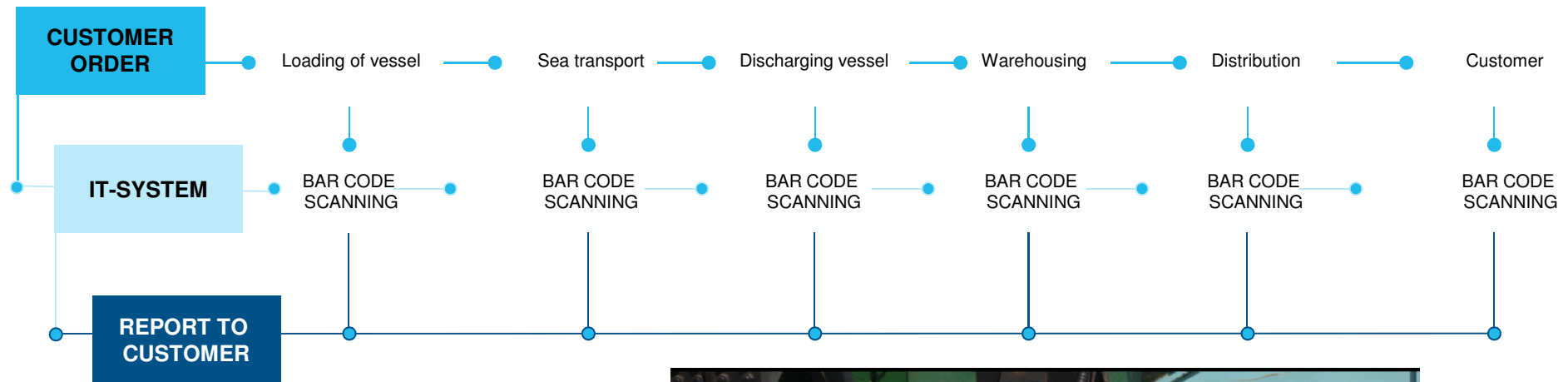


Integrated logistics general flow

1. Partner order for sea transport.
2. Loading of vessel.
3. Bill of Lading received and Tally (using scanner) before receipt into warehouse location.
4. Customer call-off for transport from discharging port to final destination (customer site).
5. Transport booking, printout of freight documents, delivery report & loading of truck/ rail/ barge carrier.
6. Unloading and possible "Transport arrival confirmation" sent to Österströms, enabling traceability throughout the entire logistic flow.



Uniting IT-system for integrated logistics



- Standardized equipment.
- Customized to fit customer demand and need.
- High added value and great potential income in increased information.

