



To business editors:

Contact persons:

Telephone:

Internet:

Press release for immediate publication

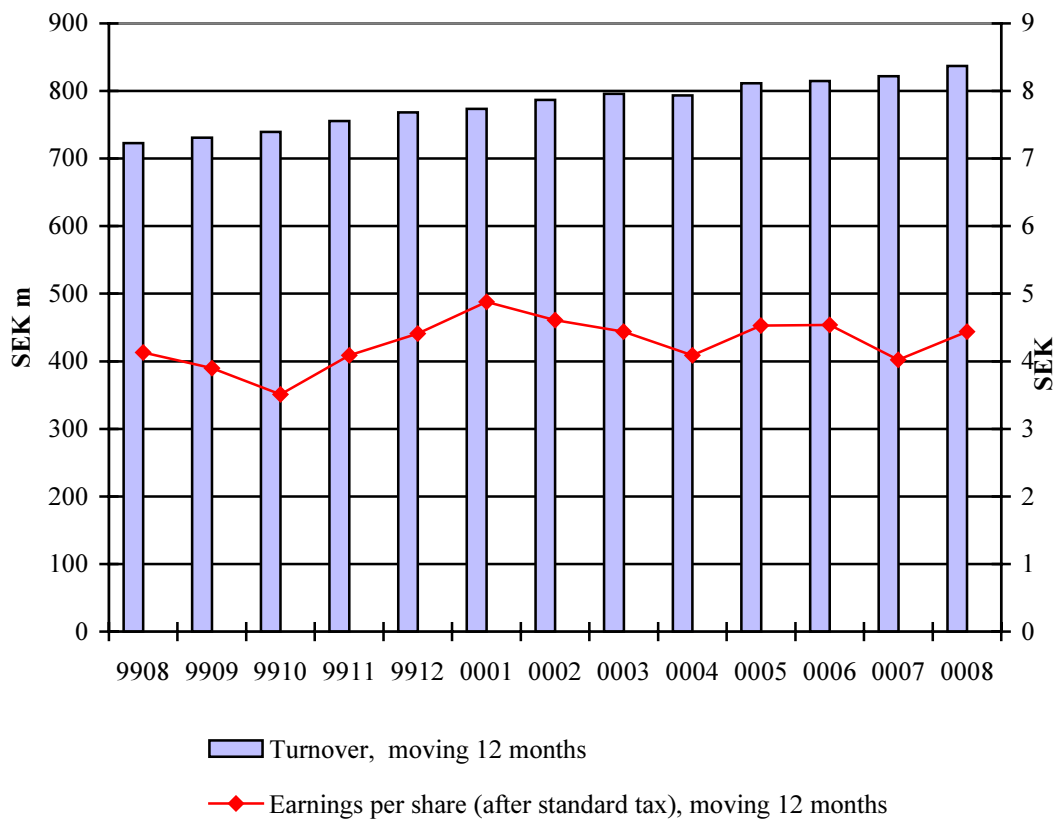
Anders Remius, MD and Kent Hertzell, Financial Director

+46 (0)8-683 73 00

www.hl-display.com

Report January-August 2000 HL Display AB (publ)

- Sales for January to August increased by 13.9 % to SEK 560.6 m (492.1) compared to corresponding period 1999.
- Profit before tax for the period amounted to SEK 30.1 m (29.9).



Address:
HL Display AB (publ)
Horisontvägen 26
S-128 34 Skarpnäck
SWEDEN

Telephone:
+46 8 683 73 00

Telefax:
+46 8 683 73 01

E-mail:
info@hl-display.com
Internet:
www.hl-display.com

January to August 2000 in brief

The consolidated sales for the period increased by 13.9 % to SEK 560.6 m (492.1). During August sales amounted to SEK 78.8 m (63.6), an increase of 23.9%.

The period's profit before tax was SEK 30.1 m (29.9). Profits were negatively affected in an amount of SEK 8.0 m by a sharp rise in prices for the Group's primary raw material, PVC, relative to the same period of 1999. Profit for the month of August was SEK 7.0 m (2.7).

The period's net investments in fixed assets amounted to SEK 34.3 m (37.6).

Key figures for the Group ¹⁾

SEK (000s)	8 months Jan 2000 - Aug 2000	8 months Jan 1999 - Aug 1999	8 months Jan 1998 - Aug 1998	12 months Sept 1999 - Aug 2000	12 months Sept 1998 - Aug 1999	12 months Sept 1997 - Aug 1998	Full year 1999
Net sales	560 559	492 088	415 858	836 922	722 876	593 706	768 451
Operating profit	35 183	36 626	55 345	53 958	50 323	73 368	55 401
Profit before tax	30 084	29 877	56 793	47 332	44 053	75 257	47 125
Profit margin, %	5.4	6.1	13.7	5.7	6.1	12.7	6.1
Equity/assets ratio, %	49.3	52.8	52.5	49.3	52.8	52.5	51.6
Investments, SEK m	34.3	37.6	44.1	64.7	57.1	75.1	67.9
Return on capital, %	-	-	-	12.6	12.7	22.0	12.9
Return on shareholders' equity, %	-	-	-	15.2	12.5	29.3	15.3
Shareholders' equity per share, SEK	-	-	-	30.15	27.11	25.14	28.89
Earnings per share after standard tax, SEK	-	-	-	4.44	4.13	7.05	4.41
Earnings per share after full tax, SEK	-	-	-	4.35	3.27	6.58	4.20

1) For definitions, see the Annual report

Reporting dates:

Interim report	9 months 2000	17.10.2000
Monthly report	10 months 2000	16.11.2000
Monthly report	11 months 2000	18.12.2000

Stockholm 15.09.2000



Anders Remius
Managing Director

HL Display shall increase customer profitability by offering the retail trade and its suppliers cost efficient, customer-adapted display systems. Production is to be flexible and delivery times are to be kept short.